

FRIDAY, 20TH FEBRUARY 2026

Dear parents and carers,

In the first message I broadcasted a couple of weeks ago, I indicated a core part of our school mission is to develop a sense of belonging and that our Social and Emotional Curriculum is key to our work in the classrooms.

Our Second Strategic priority is; To grow the personal and social capabilities of all students as empathetic, inclusive citizens and lifelong learners in order to improve student and family social outcomes.

Our classes from preschool to year 6 have been developing a sense of belonging during the first few weeks which enables classes to effectively develop relationships and set up routines, expectations and learning groups. A key component of our school expectations is our PBL Framework (Positive Behaviours for Learning) which provides the students and adults in the school guidance and rules for how we communicate, learn and play. Here are a few of the key expectations for students to adhere to. These school expectations are part of our discussions at Tuesday morning assemblies and during learning house meetings and classroom discussions.

	BE SAFE	BE RESPECTFUL	BE A LEARNER
All Settings	I keep my hands and feet to myself	I follow instructions	I am in the right place at the right time
	I move safely	I am respectful	I participate in school activities

These focuses are coupled with our S.E.L (social and emotional learning) of Play is The Way which I will illustrate next week along with other strategies involving our second priority.

K – 2 READING WORKSHOP

Our school has organised a reading workshop in the Learning Hub for families in Years K-2 next Monday, 23rd February. The reading workshop will be held in 2 parts, part 1 will be for kindergarten families from 3:15-3:50pm where reading strategies will be introduced to support our Home Reading Program, part 2 will focus on star words for kindergarten, year 1 and year 2 families from 4:00-4:30pm. Please RSVP by completing the slip on the note sent home last week.

GETTING TO KNOW YOU INTERVIEWS

This week teachers have posted on Seesaw, invitations for parents to make a time to meet for these conversations. We highly value a beginning of the year check in together to set the plan for your child with you for the year.

KINDY HEALTH CHECKS

Kindergarten Health Check Envelopes have been handed out to families and need to be returned to the front office or your child's class by Thursday, 26th February 2026. If you have any questions, or do not want your child to participate, please contact the front office.

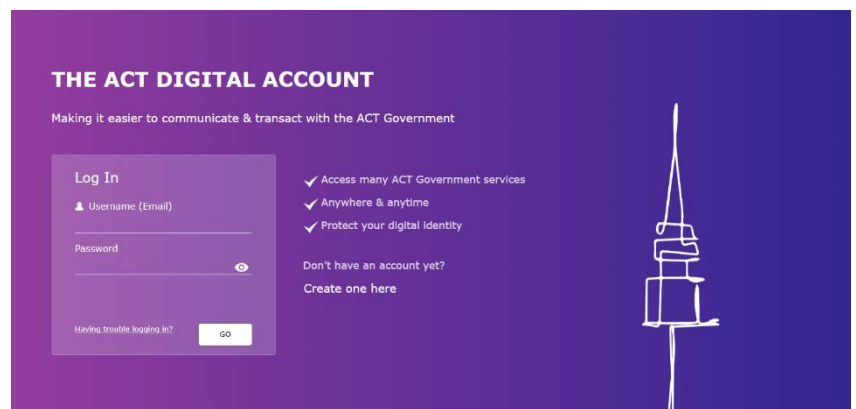
Jason Walmsley

Principal

PARENT PORTAL

As we begin the start of the year it is a good opportunity to ensure we have all your details correct and you as parents are aware about the new procedures to engage with the school on the PARENT PORTAL. **We have a large number of parents that still haven't registered and this will be a requirement moving into 2026.**

Please see the steps that you need to take to ensure you have online access to the parent portal. We have advertised this throughout the year, and this will be a core part of communication, payments and online access for you. If you have not received the email with your access key, please contact the front office to have it re-sent to you.



One of the many benefits of the Parent Portal is that it will be used by all ACT public schools from preschool through to year 12, so there will be no need to use a different system as children change schools during their public-school journey. If you have children at nearby schools, you will not need to sign up to the system twice. You will be able to easily add a student to your account once their school has access to the Parent Portal.

[SIGN UP NOW!](#)

The Education Directorate website's Parent Portal page provides detailed instructions about [how to register for Parent Portal](#) including identification documents.

To access Parent Portal you will need to create or have access to an [ACT Government Digital Account](#) and complete the level 2 identity verification.

The mobile number, first and last names for your Digital Account must be an exact match for those the school uses to contact you. If you already have a Digital Account in which any of these are different from what's on the school's records, you can:

- ★ contact the school to have your mobile number in the school records changed, so you can use your existing Digital Account (recommended), or
- ★ make a new Digital Account just for use with Parent Portal.

You can sign up now and complete the Identity Verification process at any time to get ready to use the Parent Portal.



Charles Conder Primary School
'Know the Child, Grow the Child'

CHARLES CONDER P-6 SCHOOL

PRINCIPAL'S MESSAGE

UPDATING OF CONTACT DETAILS

Just a reminder for all parents and carers that if you have changed any details for example, email address, residential address or phone number. Please let us know via email info@conderps.act.edu.au so we can ensure all details are correct and up to date.

STAY CONNECTED



Liking the 'Charles Conder Primary School' Facebook page and downloading the Seesaw App are great ways to keep up to date with all the things that are happening at our school!

You can also follow the Charles Conder PS P&C on Facebook to learn more about our P&C, volunteer at upcoming events, or stay up to date with fundraising and canteen news. You can also contact the P&C via email: ccpspandc@outlook.com



The Charles Conder Primary School Board meets once a term and is responsible for the governance and strategic directions of the school. If you would like to contact the School Board, you can contact them via email: charlesconderps.schoolboard@ed.act.edu.au



Charles Conder Primary School
'Know the Child, Grow the Child'

CHARLES CONDER P-6 SCHOOL

PRINCIPAL'S MESSAGE

LEARNING FOR LIFE-THE SMITH FAMILY

Learning for Life is a program in school for students who meet the eligibility criteria, please see the flyer below and contact the front office if you would like an expression of interest form.



What is *Learning for Life*?

The *Learning for Life* program works in partnership with families to support their children's education and increase their chances of success at school.

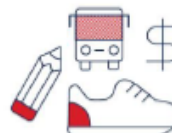
Learning for Life provides:



Support from a dedicated Family Partnership Coordinator



Access to educational programs for the whole family



Scholarship money to help with the costs of schooling

Who is eligible for *Learning for Life*?



To be eligible, a family must:

- ✓ Have a current Health Care or Pension Concession Card
- ✓ Have a child in a primary school we work with
- ✓ Demonstrate commitment to education through regular school attendance

What else do I need to know?

Learning for Life is a partnership between the family and The Smith Family.

The parent, guardian, or caregiver, must commit to:

- Regular school attendance
- Completing a yearly update for each child
- Providing a school report yearly for each child
- Maintaining contact with The Smith Family



How can a family join *Learning for Life*?

If you know a family who meets all the above eligibility criteria and would like to join the *Learning for Life* program, please provide the expression of interest form or speak to your local Family Partnership Coordinator.



Latoya Monaghan
Family Partnership Coordinator

M
E

latoya.monaghan@thesmithfamily.com.au

TERM 1, 2026 EVENTS CALENDAR

WK	MON	TUE	WED	THU	FRI
1	26/01 AUSTRALIA DAY PUBLIC HOLIDAY	27/01	28/01	29/01 STUDENT-FREE DAY	30/01 Kindy Return
2	02/02 Early Week Pre and Years 1-6 Students Return	03/02	04/02 Late Week Pre Return	05/02	06/02
3	09/02	10/02	11/02	12/02	13/02
4	16/02	17/02	18/02	19/02	20/02
5	23/02 Reading/Star Words Workshop Kindy 3:15-3:50pm K,1,2 4:00-4:30pm	24/02	25/02 Preschool Parent Workshop 5-6pm	26/02	27/02
6	02/03	03/03	04/03	05/03	06/03
7	09/03 CANBERRA DAY PUBLIC HOLIDAY	10/03	11/03 NAPLAN	12/03	13/03
8	16/03	17/03	18/03 Swimming Carnival	19/03	20/03
9	23/03	24/03	25/03	26/03	27/03 Tugg. Swimming Carnival
10	30/03	31/03	01/04	02/04	03/04 GOOD FRIDAY PUBLIC HOLIDAY